

# CORAL REEF

*SDN Carpet Tile 50cm x 50cm*

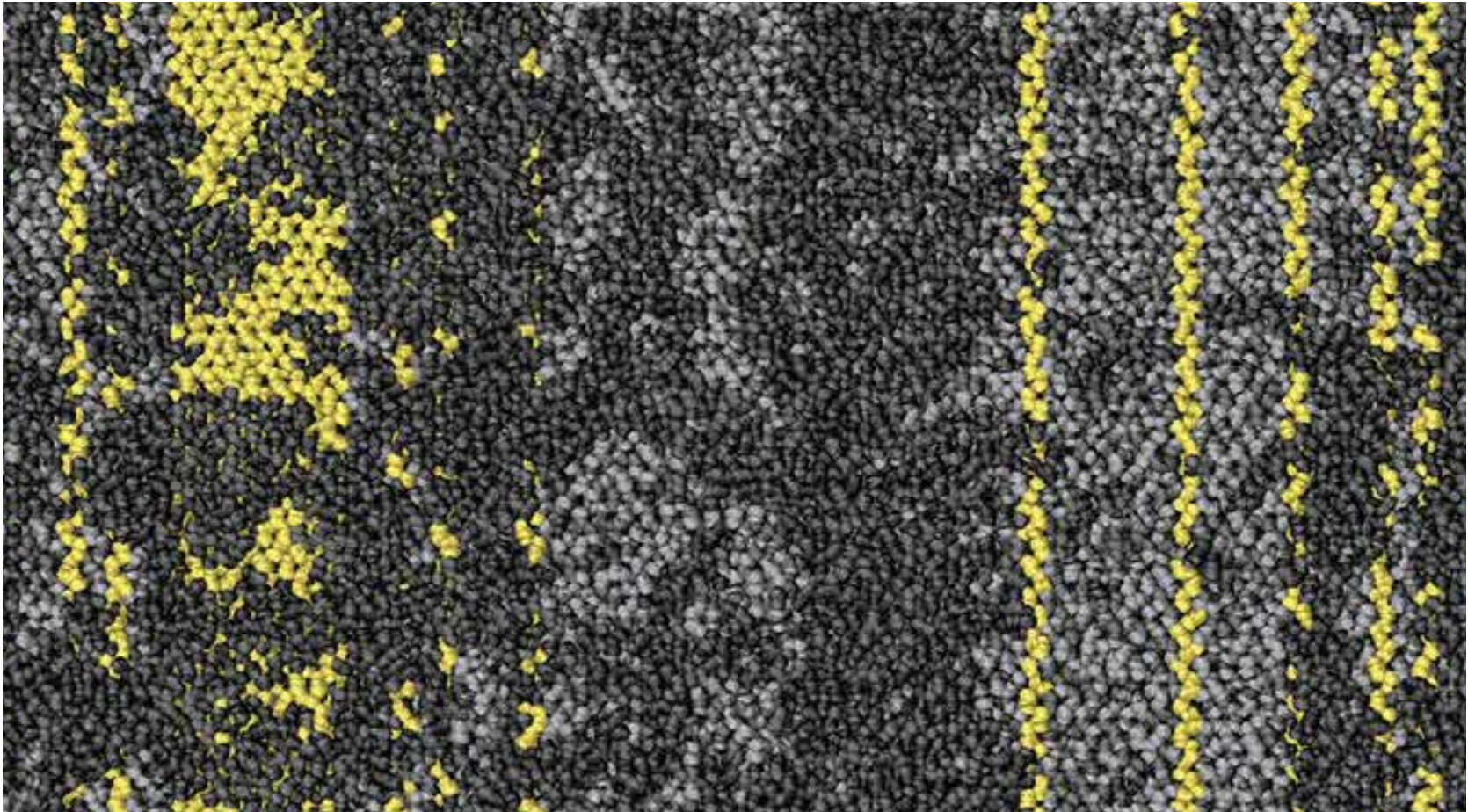


*Scroll loop Carpet*

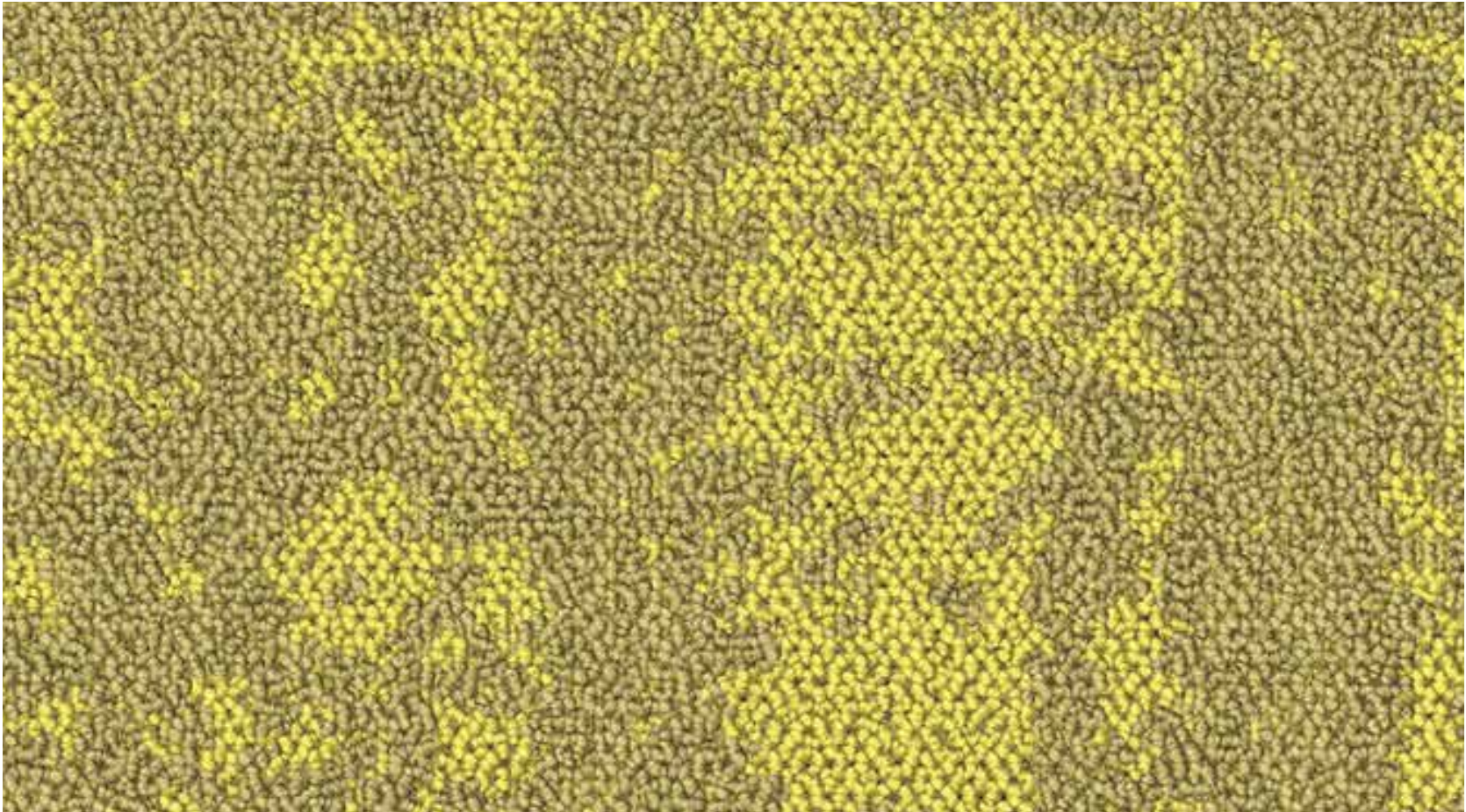


# CORAL REEF

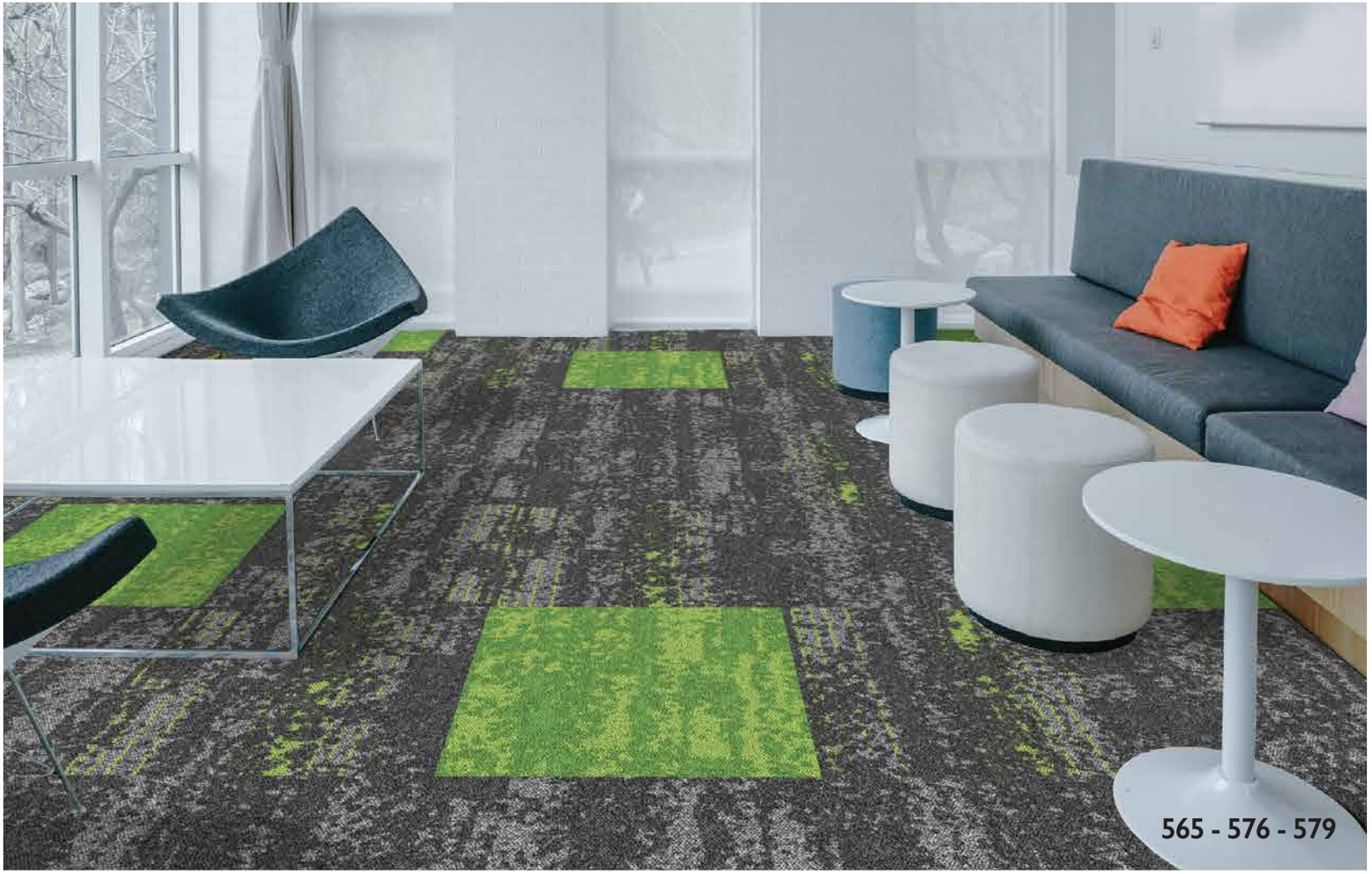
*SDN Carpet Tile 50cm x 50cm*



Yellow Transition 571



Yellow 535



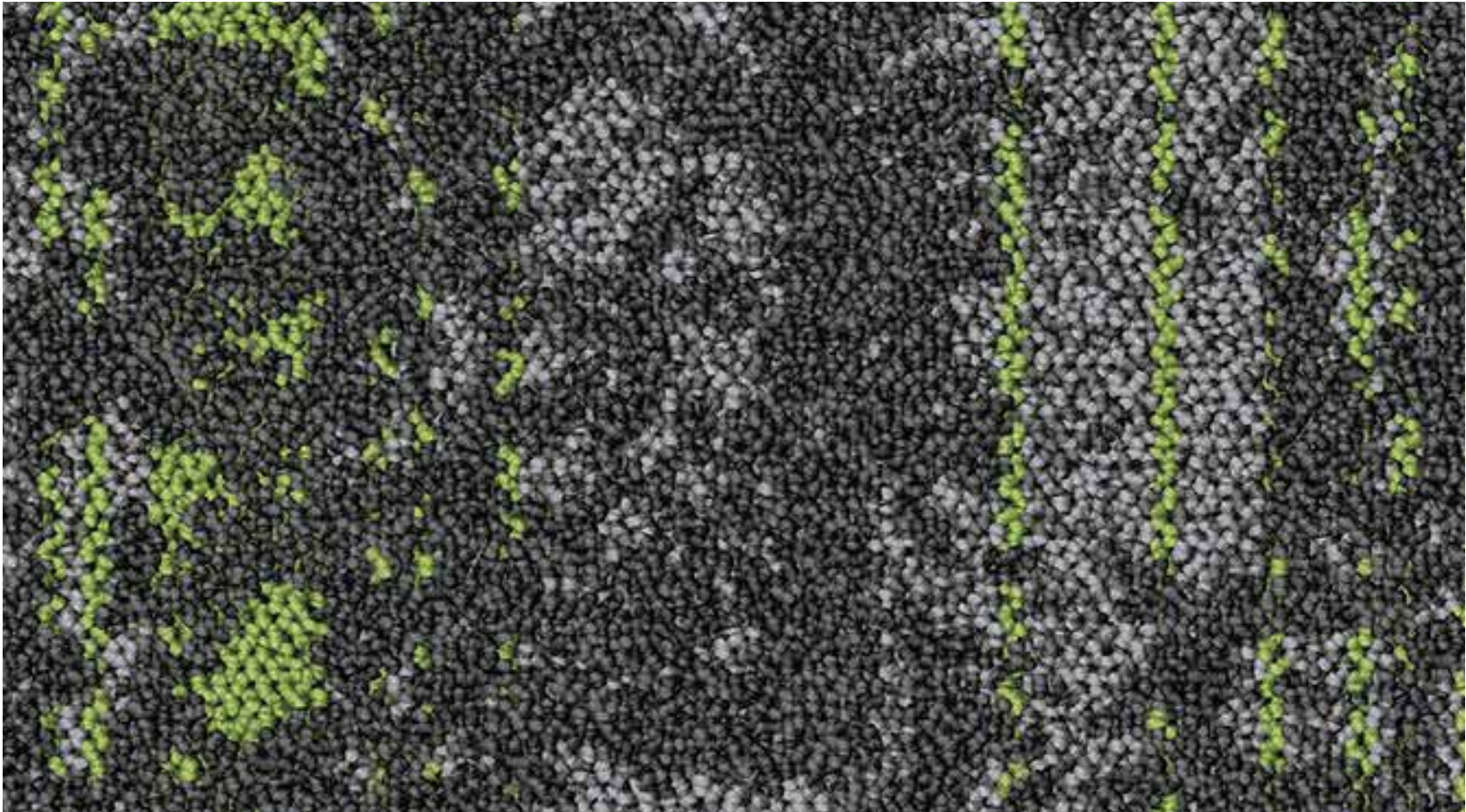
565 - 576 - 579



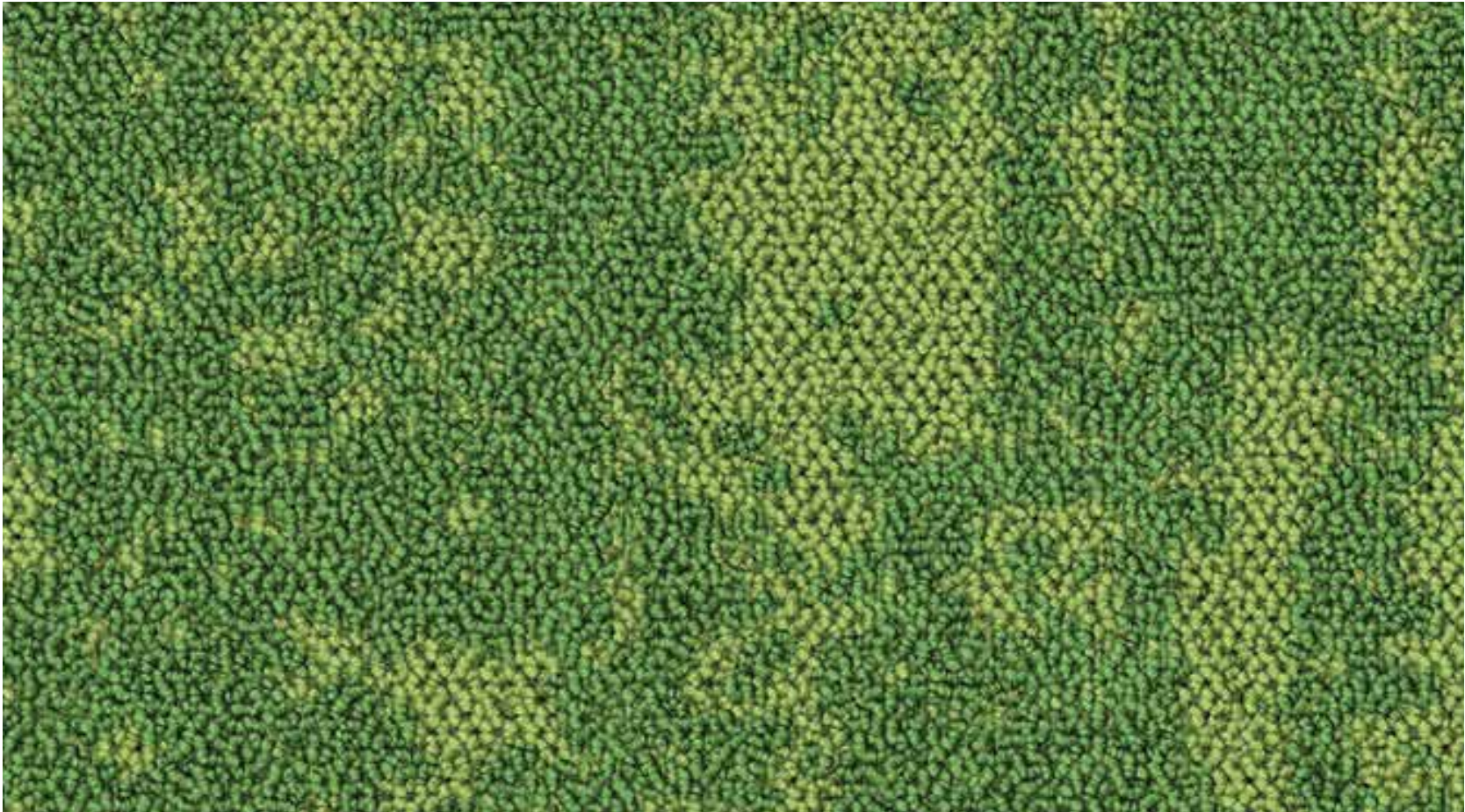
535 - 579

# CORAL REEF

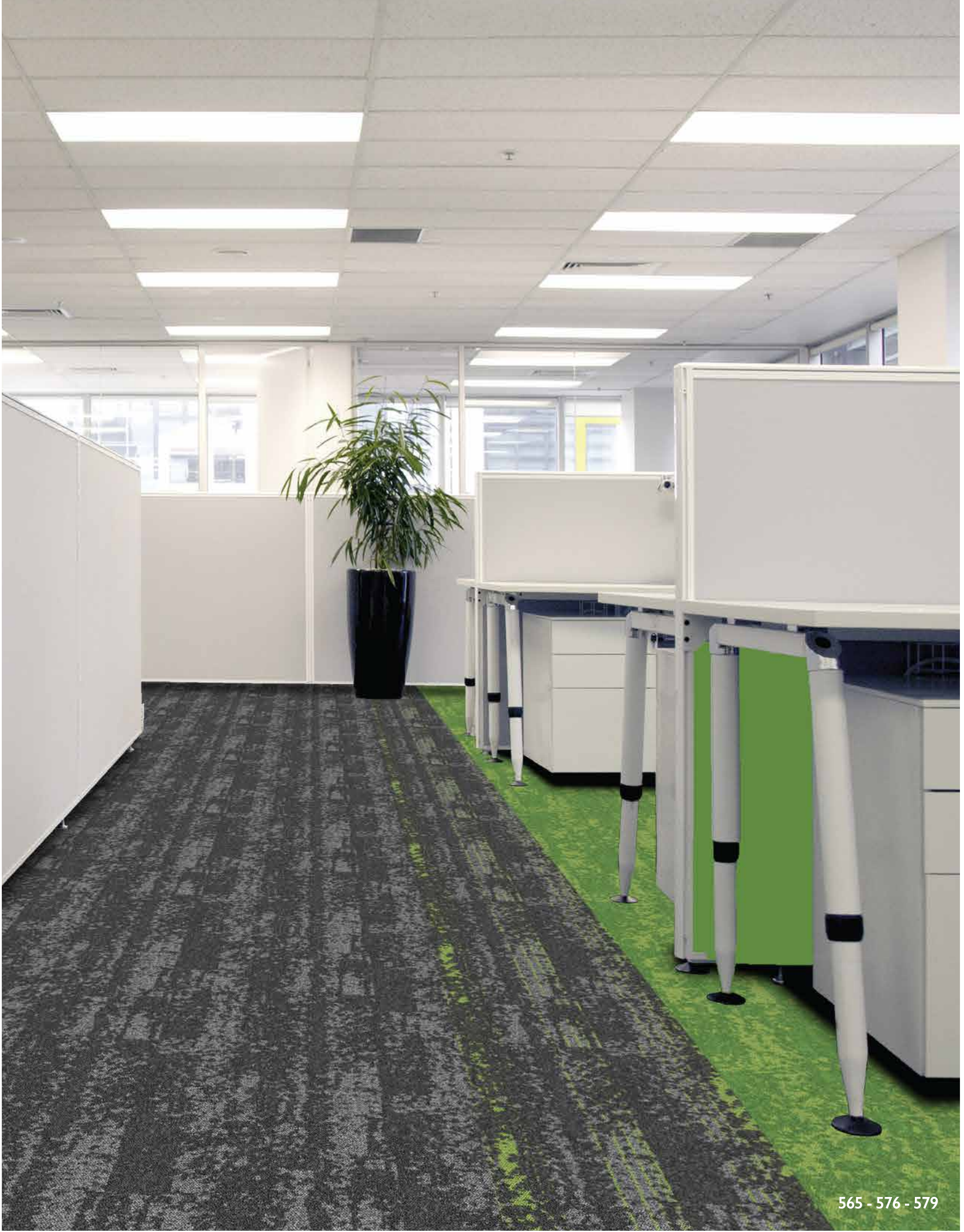
50cm  
50cm  
TILE



Green Transition 576

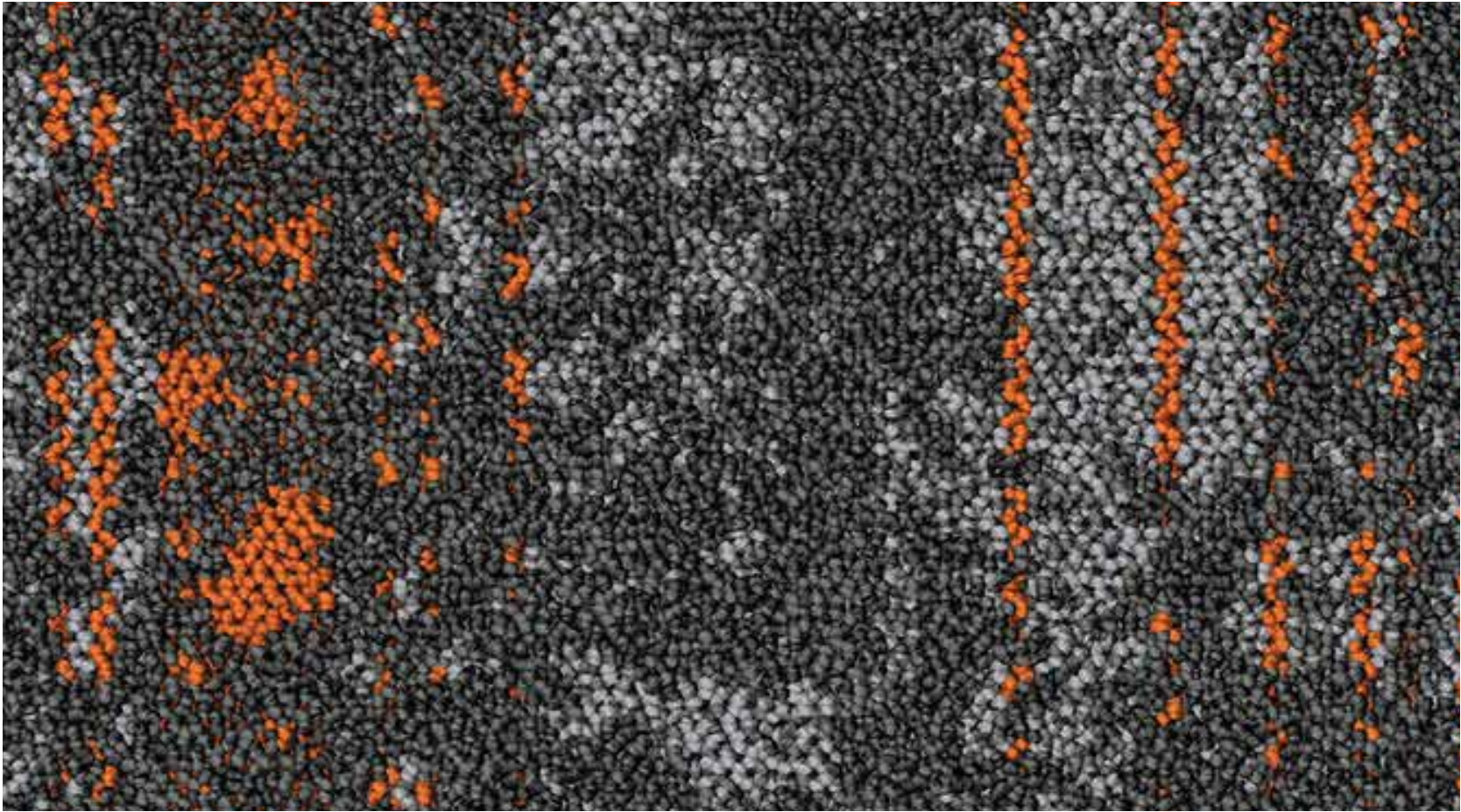


Green 565

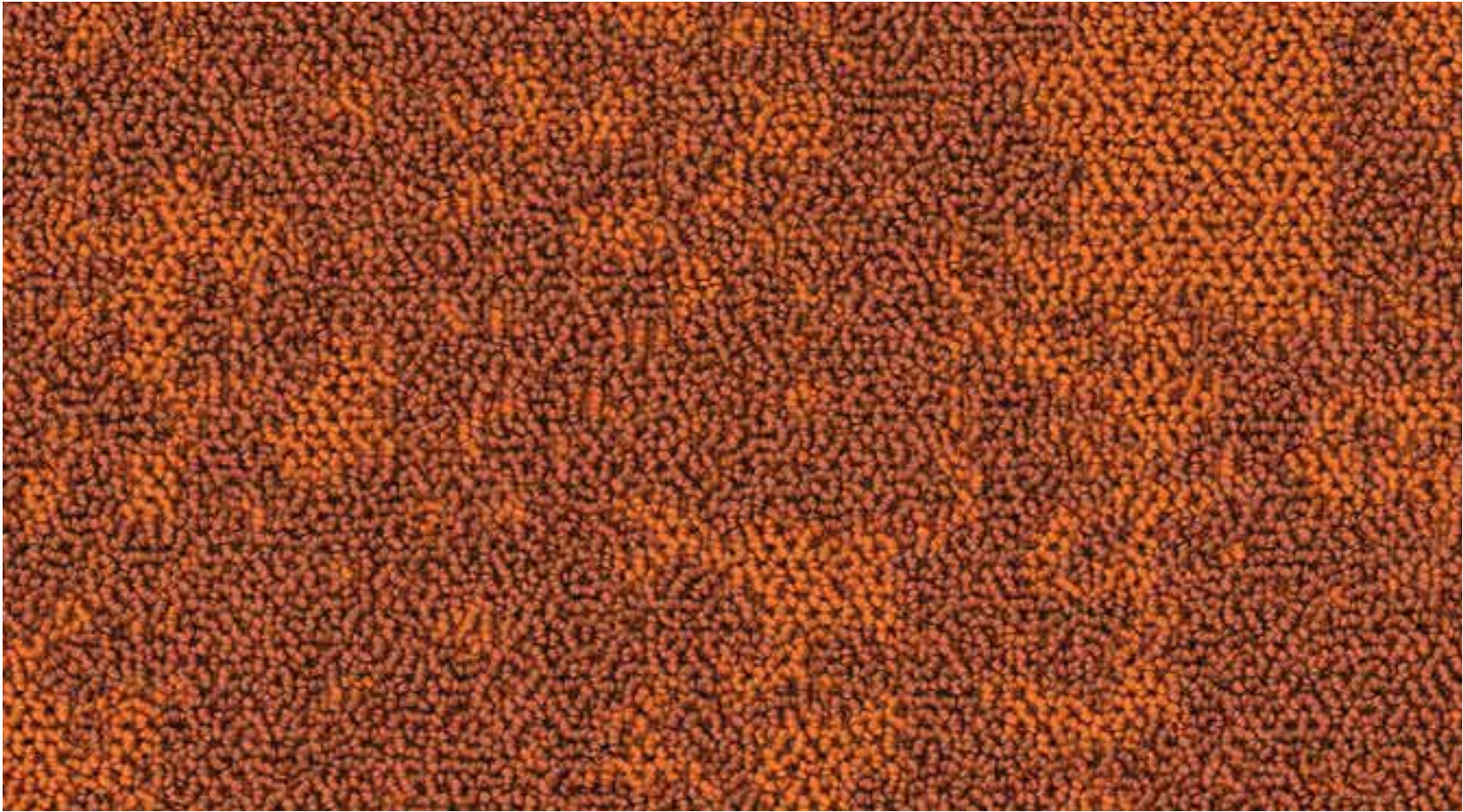


# CORAL REEF

50cm  
50cm  
TILE



Orange Transition 570



Orange 522



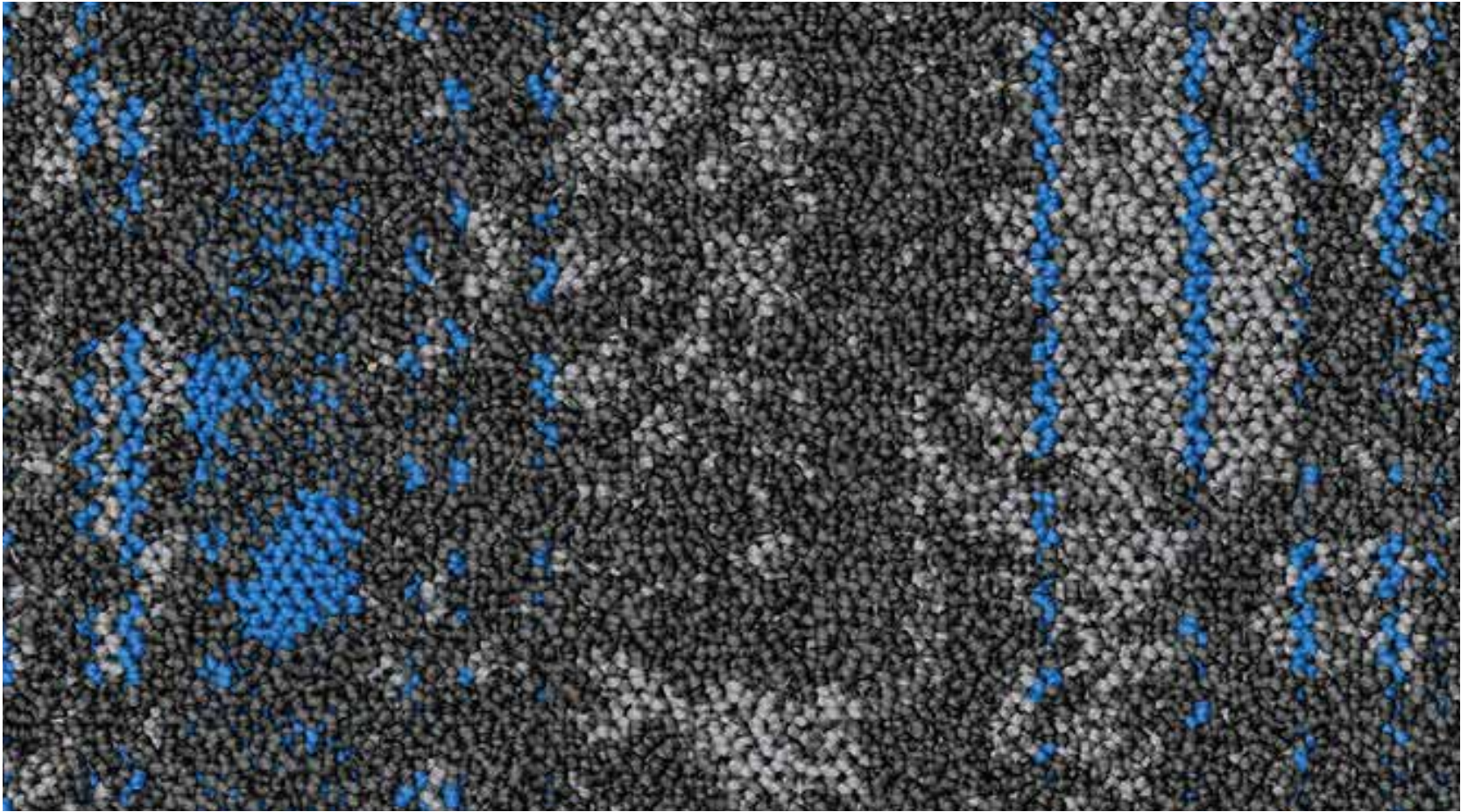
522 - 570 - 579



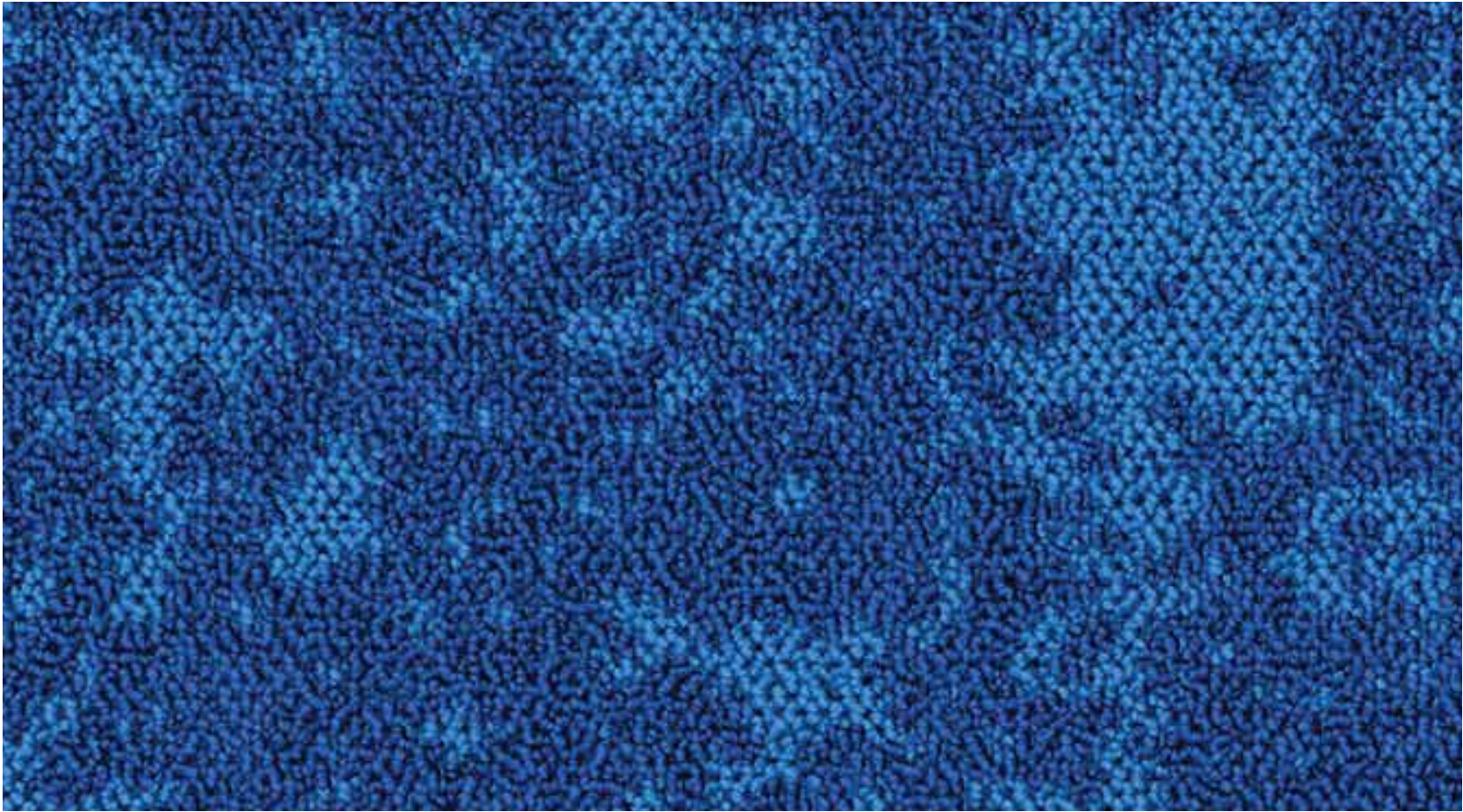
578

# CORAL REEF

*SDN Carpet Tile 50cm x 50cm*



Blue Transition 577

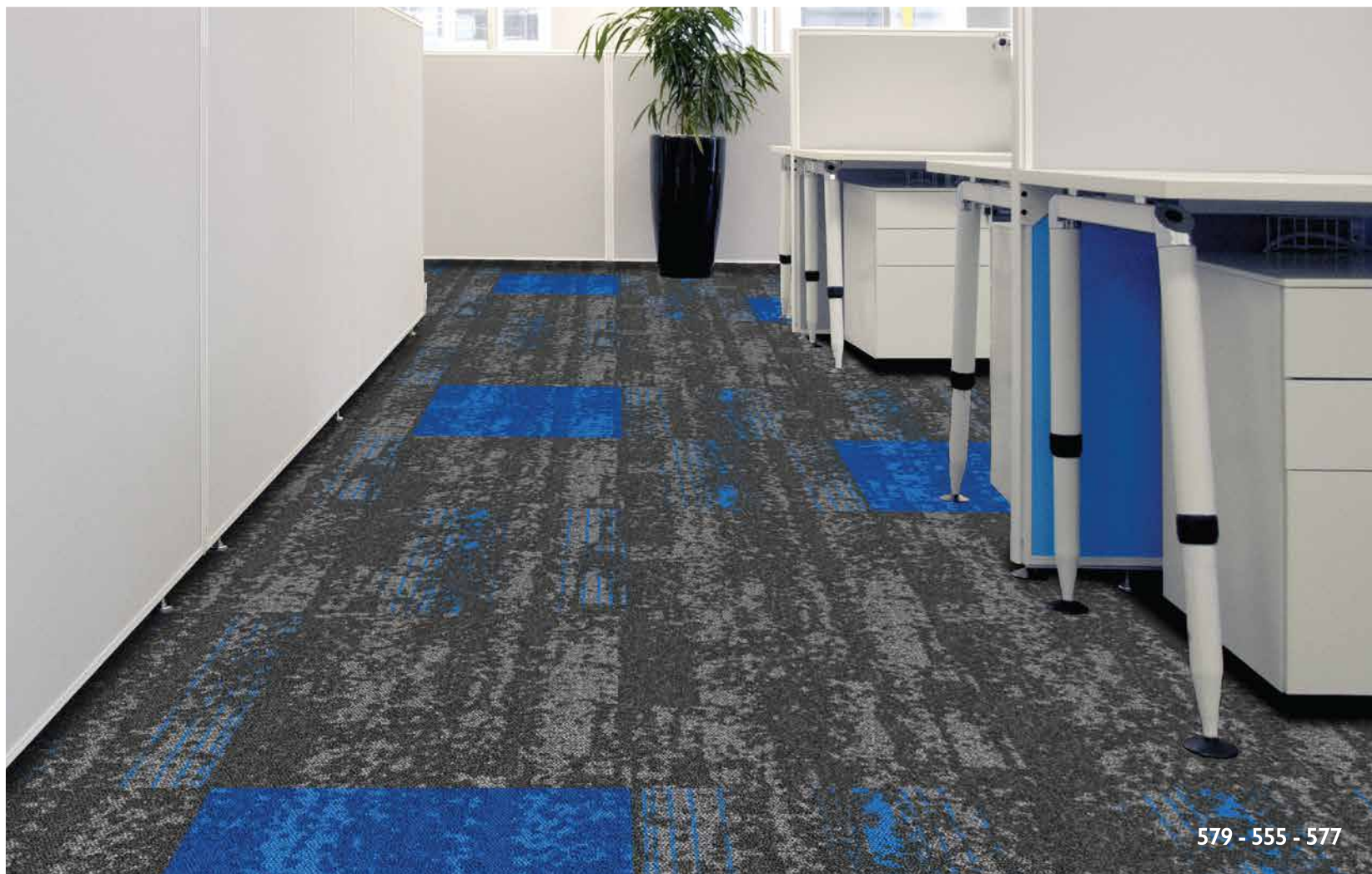


Blue 555





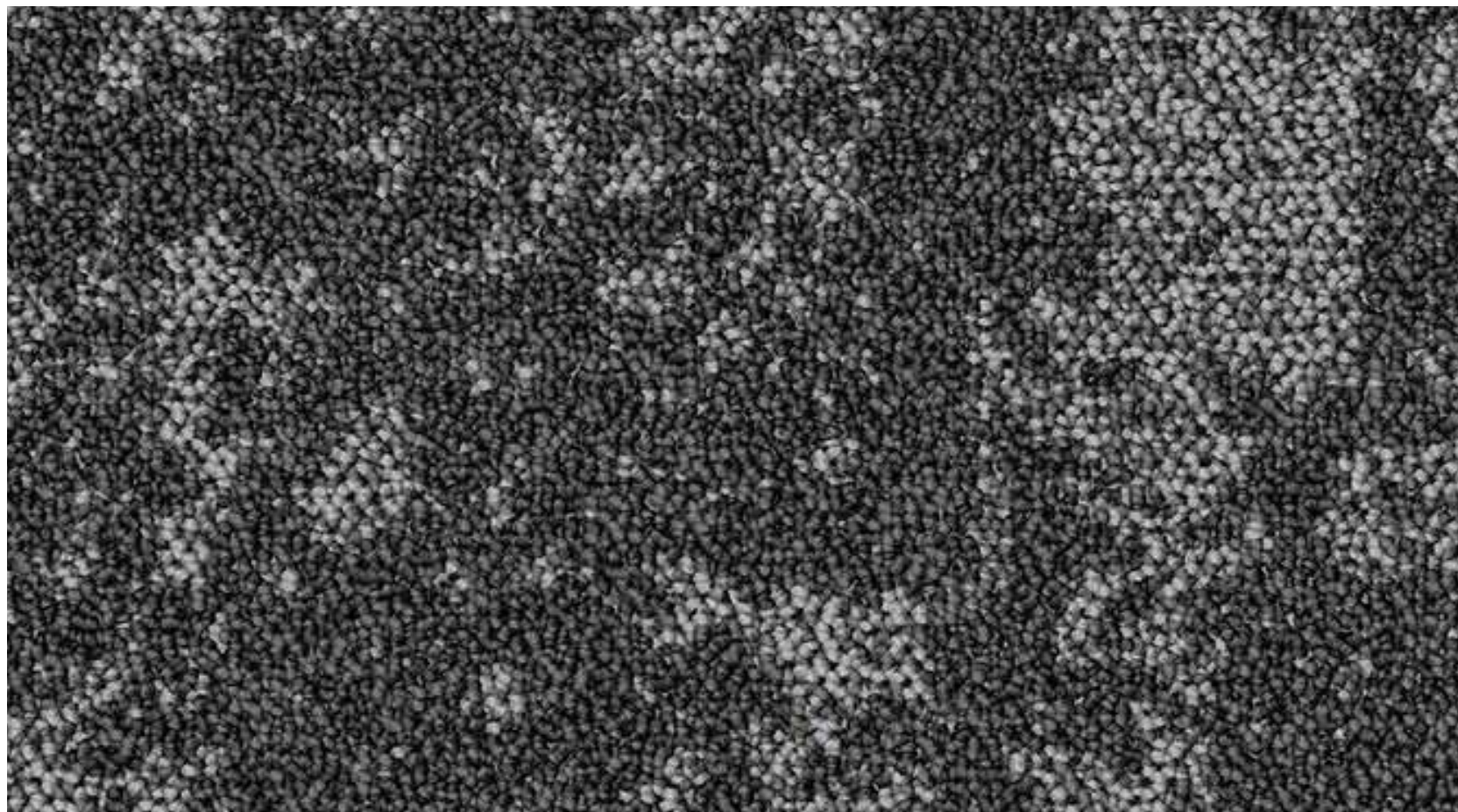
579



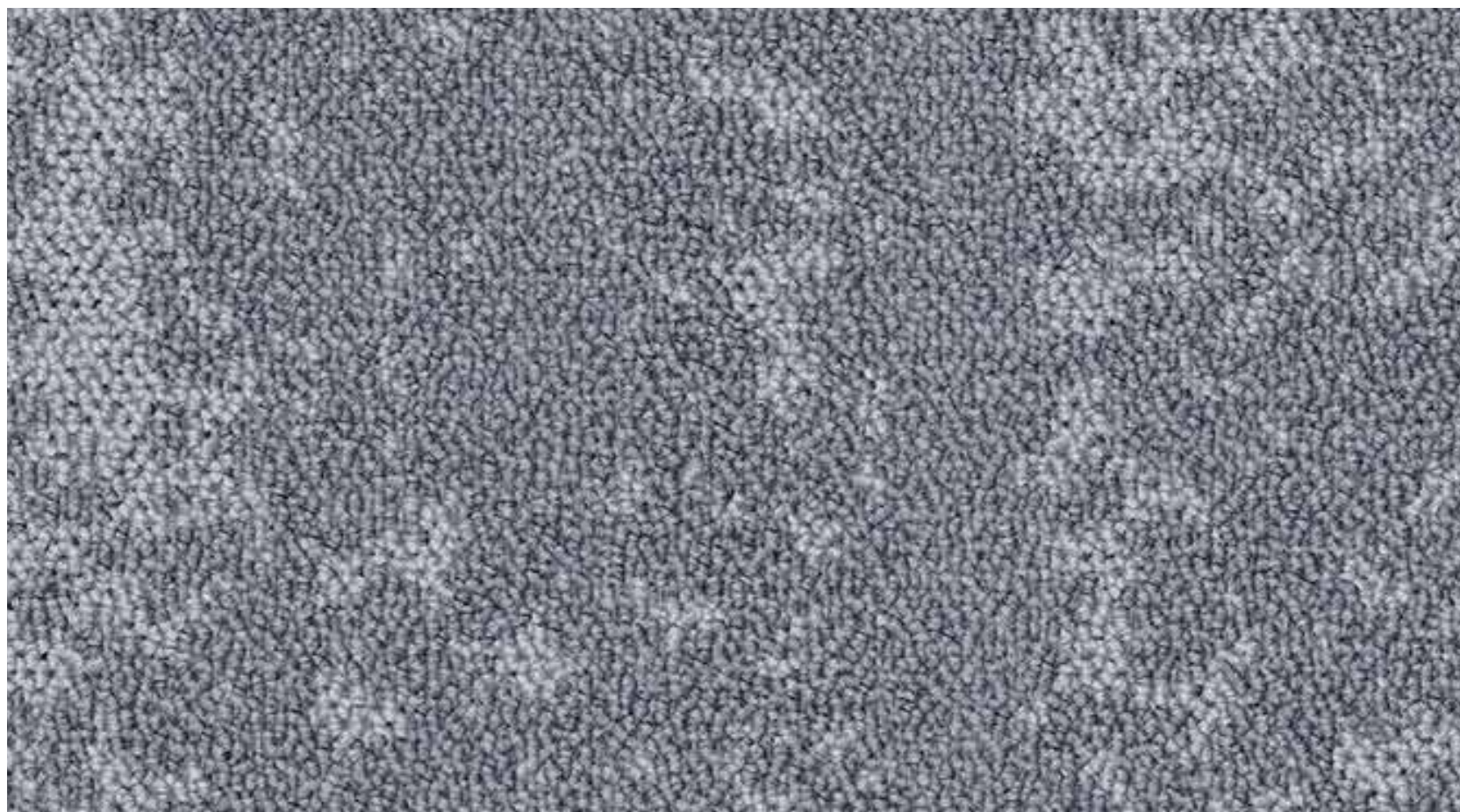
579 - 555 - 577

# CORAL REEF

*SDN Carpet Tile 50cm x 50cm*



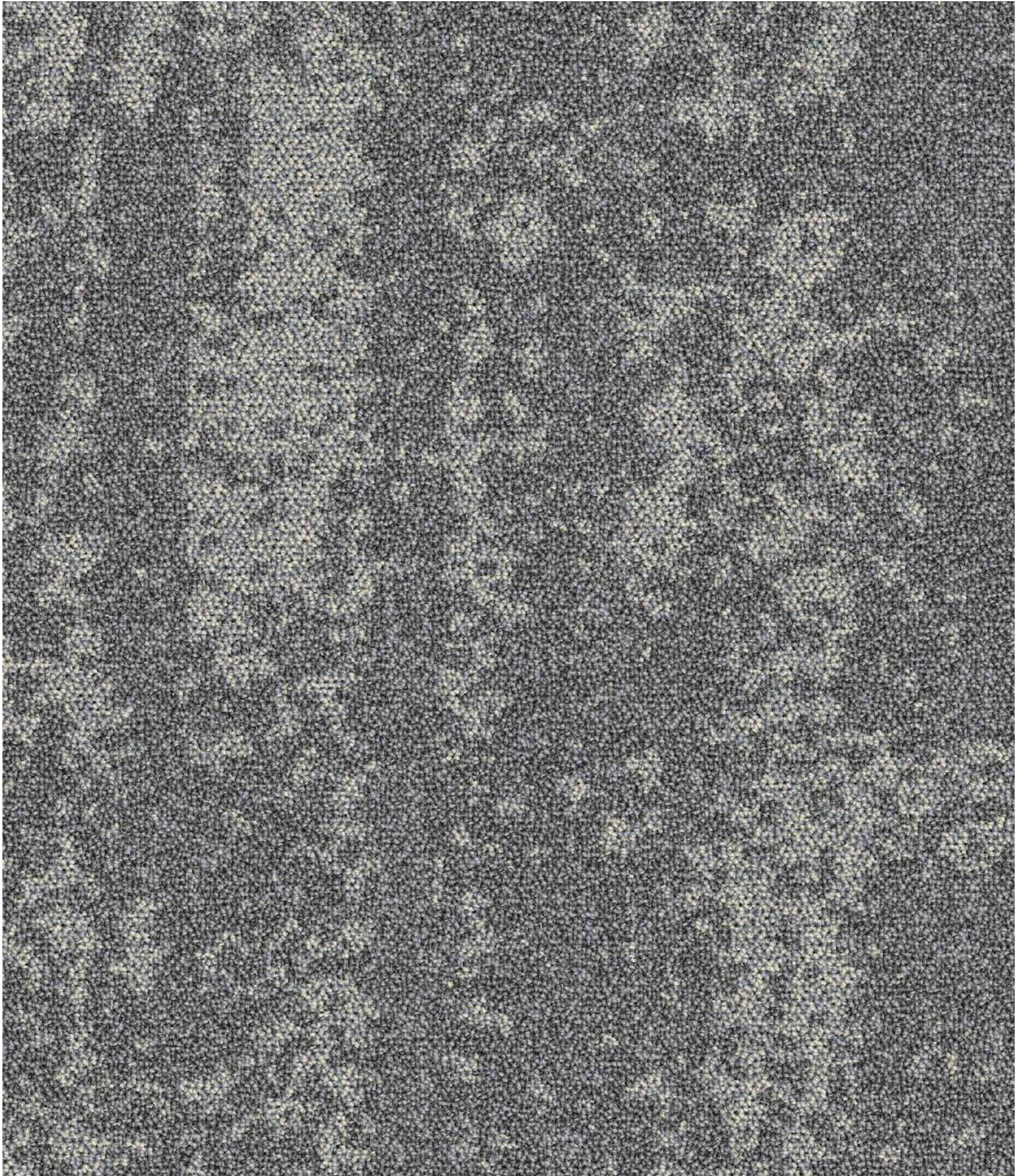
Dark Grey 579 (Base)



Light Grey 575 (Overall)

# CORAL REEF

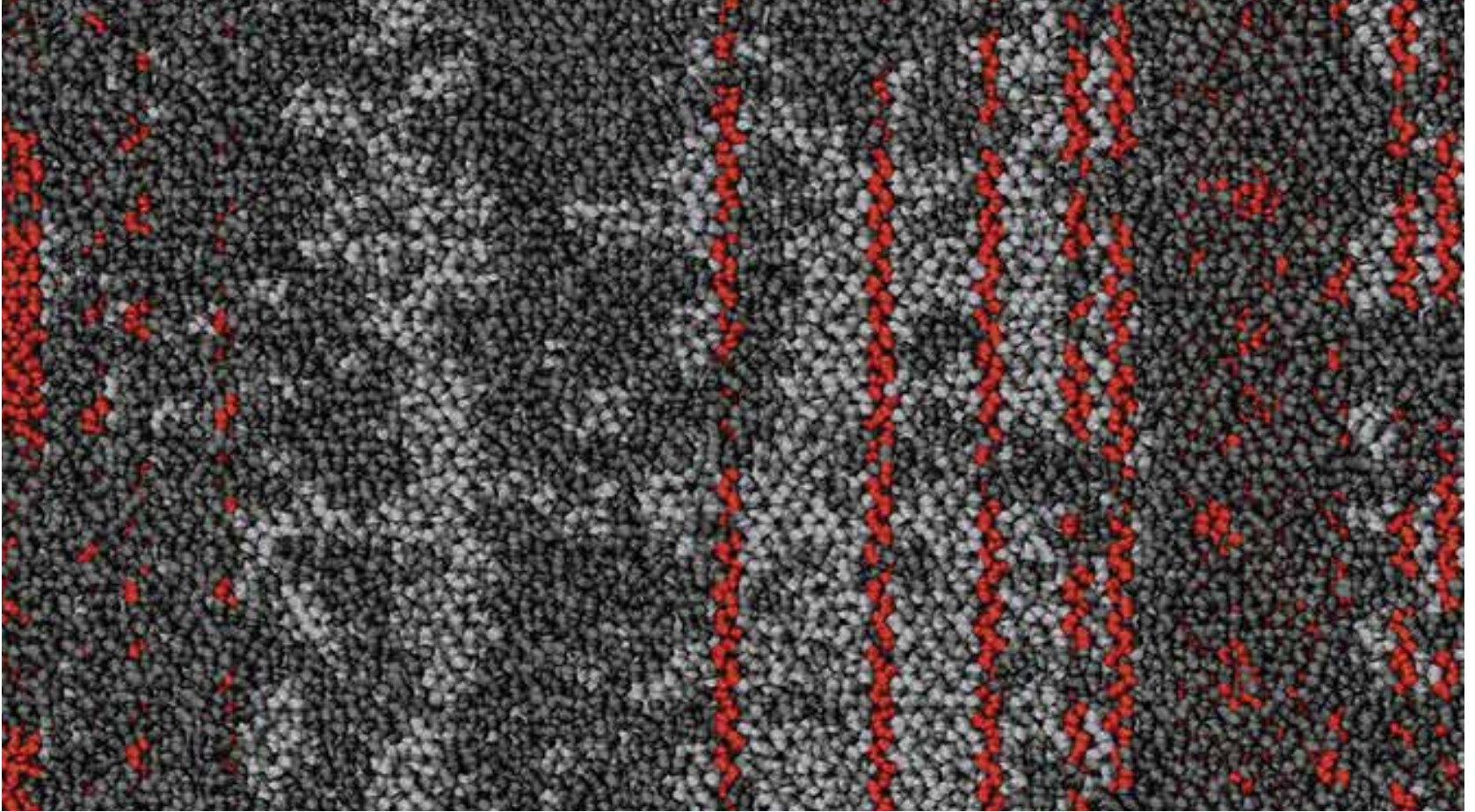
*SDN Carpet Tile 50cm x 50cm*



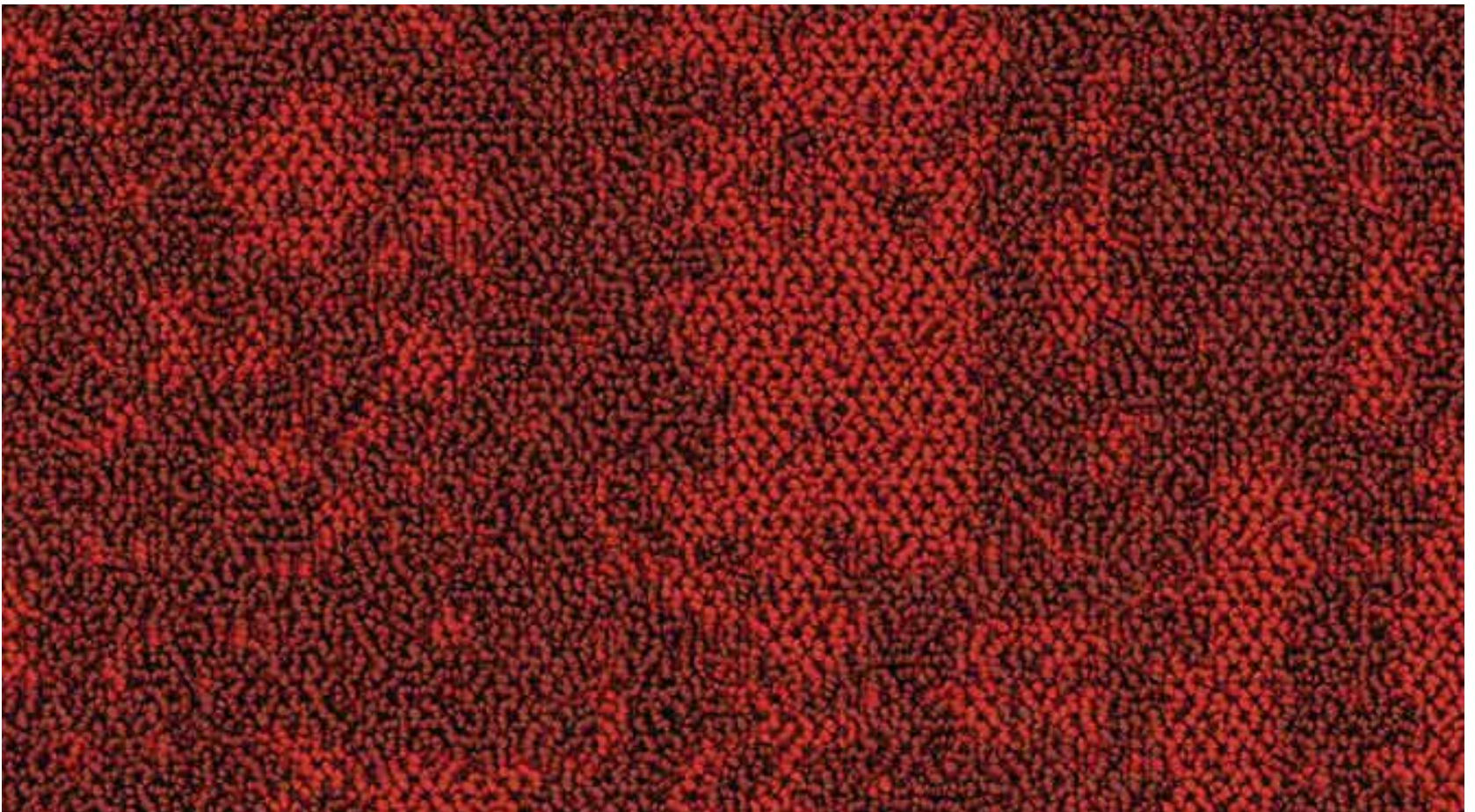
Grege 578 (Overall)

# CORAL REEF

50cm  
50cm  
TILE



Red Transition 572



Red 525



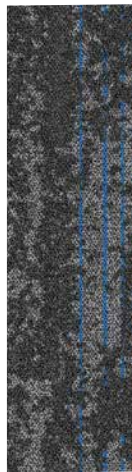
CORAL REEF (50 x 50cm Tiles) can also be ordered in planks as

# CORAL ISLAND

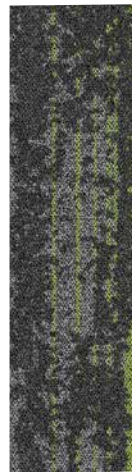
Narrow Plank - 25 cms x 1mtr (on request)



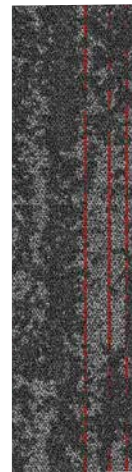
579 Base Col.



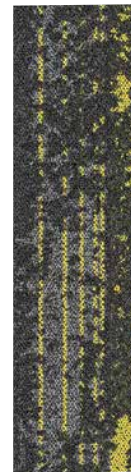
577



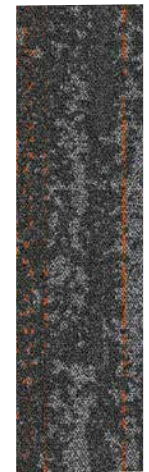
576



572



571



570



555



565



525



535



522

# CORAL REEF

SDN Carpet Tile 50cm x 50cm



## PRODUCT INFORMATION

Construction	LOOP
Style	CORAL REEF
Fiber	SDN (Solution Dyed Nylon 6)
Pile Weight	550 gm/m <sup>2</sup>
Total Weight	4.6 kg/m <sup>2</sup>
Gauge	1/10th
Primary Backing	Non-Woven
Secondary Backing	100% Vinyl StableShield
Size	50cm x 50cm
Pile Height	3.5 mm
Recommended Installation	Quarter Turn & Brick
Tile / Carton	20 Pcs (5m <sup>2</sup> )

## TECHNICAL PERFORMANCES

Classification	Commercial / Heavy Contract	Class 33
VOC (Green Label Plus)	ASTM D5116-06	< 0.5 mg/m <sup>2</sup> /hour (CRI GLP)
Flammability	ASTM D-2859//FF 1-70//16CFR 1630	Pass 8/8
Reaction to Fire	ASTM E648-08	Cfl-S1
Static Propensity	ISO 6356	0.2 KV
Color Fastness	AATCC/16	5/5 on Grey Scale
Termal Resistance	ISO 8302	0.04 m <sup>2</sup> /KW
Impact Sound Insulation	ISO 140-8	23 dB
Dimensional Stability	EN 986	< 0.20%
Castor Chair Test	DIN 54324	R ≥ 2.4
Smoke Density	EN ISO 9239-1:2002	< 450



**Terms and Conditions:** Specifications are subject to manufacturing tolerance and maybe changed without prior notice. Dye lots may vary in colour from sample and between production lots. All product purchases are Subject to TekSol Standard Terms and conditions of Sale. Please refer to our installation Guideline, Maintenance Manual and Warranty Document for further clarification.

**Disclaimer:** This Brochure is presented for informational purposes only. Every effort is made to ensure that carpet images are of an accurate representation of the product. However, they are for illustrative purposes only and colour variations may occur in actual product, and between die series. Please note that lineal pattern when installed directional, may produce an undesired effect when lines of the same colour meet of edges. Installer need to monitor this during installations and reposition tiles where appropriate. Patterns that are random in nature may contain additional colour ways to the ones displayed on the samples. Please consult your commercial sales consultant for further informations.